

# Tadpole to Frog

1

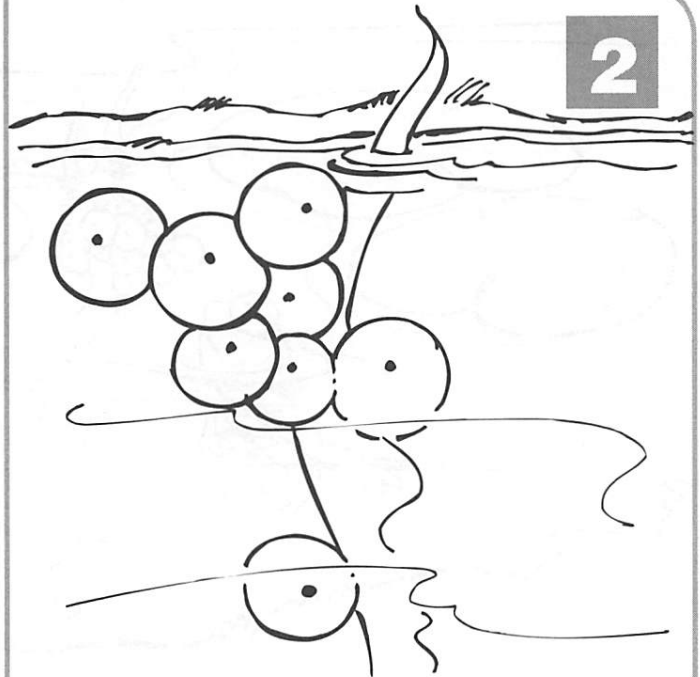


This is the pond.  
This is the pond in the park.

This is the frog that lives  
by the pond in the park.

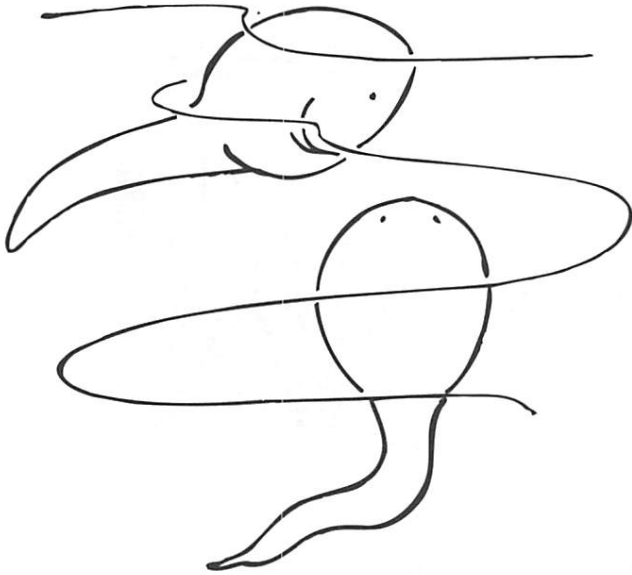


2

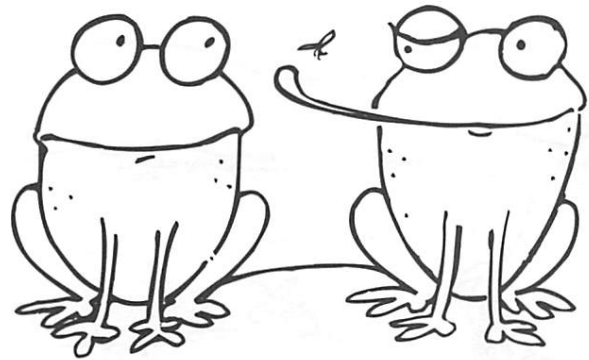


These are the eggs laid by  
the frog that lives by the  
pond in the park.

These are the tadpoles that hatched from the eggs laid by the frog that lives by the pond in the park.

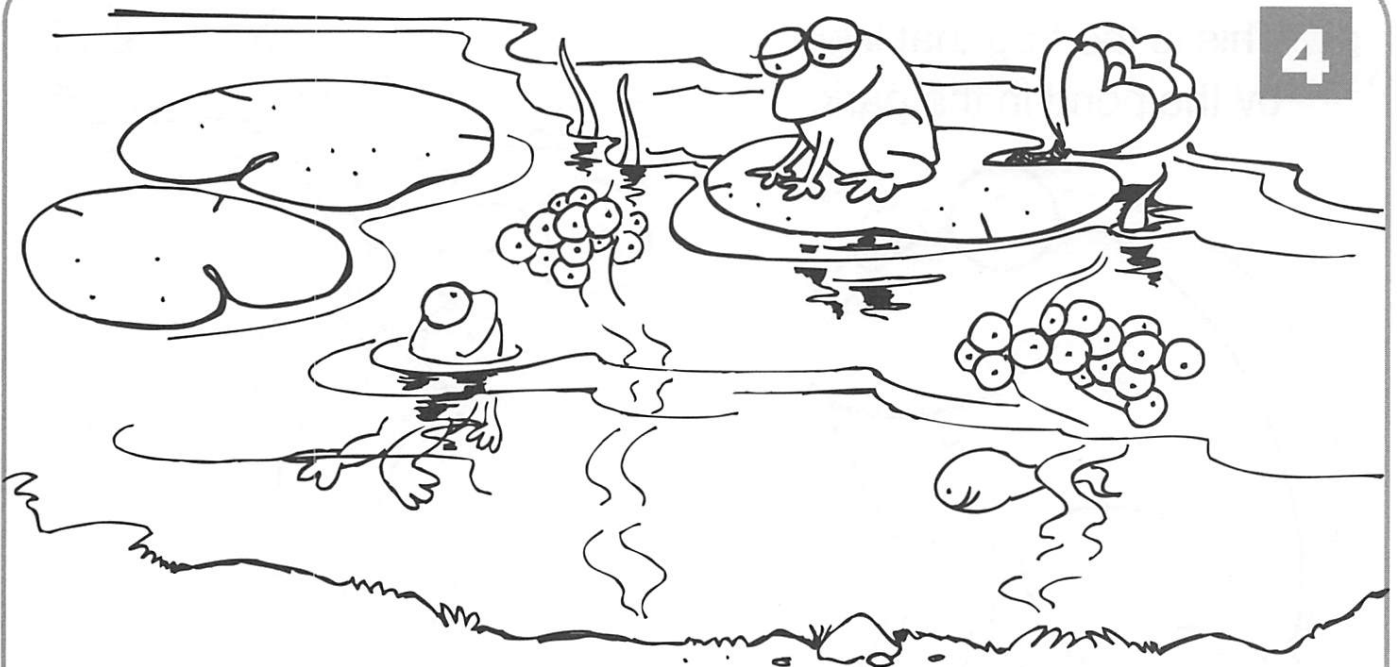


3



These are the frogs that grew from the tadpoles that hatched from the eggs laid by the frog that lives by the pond in the park.

4



These are the eggs laid by the new frogs that grew from the tadpoles that hatched from the eggs laid by the frog that lives by the pond in the park.

Name \_\_\_\_\_



## Questions about *Tadpole to Frog*

Write a sentence to tell how the frogs grow.

---

---

---

Cut and paste to show how the frogs grow.

1

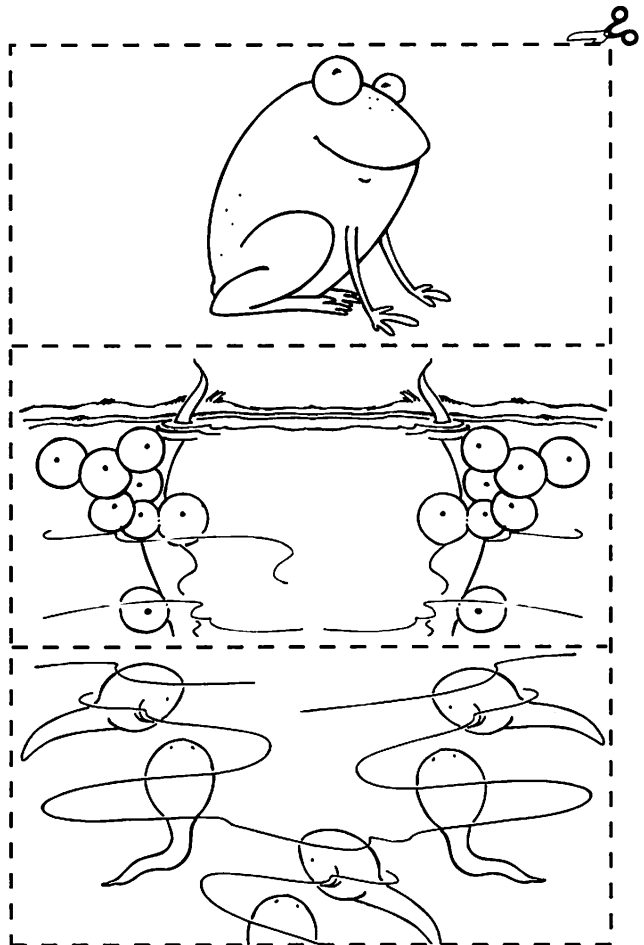
paste

2

paste

3

paste



Name \_\_\_\_\_



## Vocabulary

Draw a line to show what the words mean.

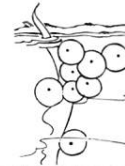
tadpole •



eggs •



pond •



## Working with Word Families

**-og**

fr + og = \_\_\_\_\_ d + og = \_\_\_\_\_

f + og = \_\_\_\_\_ h + og = \_\_\_\_\_

j + og = \_\_\_\_\_ l + og = \_\_\_\_\_

Use the new **-og** words to finish these sentences.

The bunny hid behind the \_\_\_\_\_.

I like to \_\_\_\_\_ along the path.

It's hard to see in the \_\_\_\_\_.

Use two new **-og** words to make compound words that name the pictures below.



ground \_\_\_\_\_



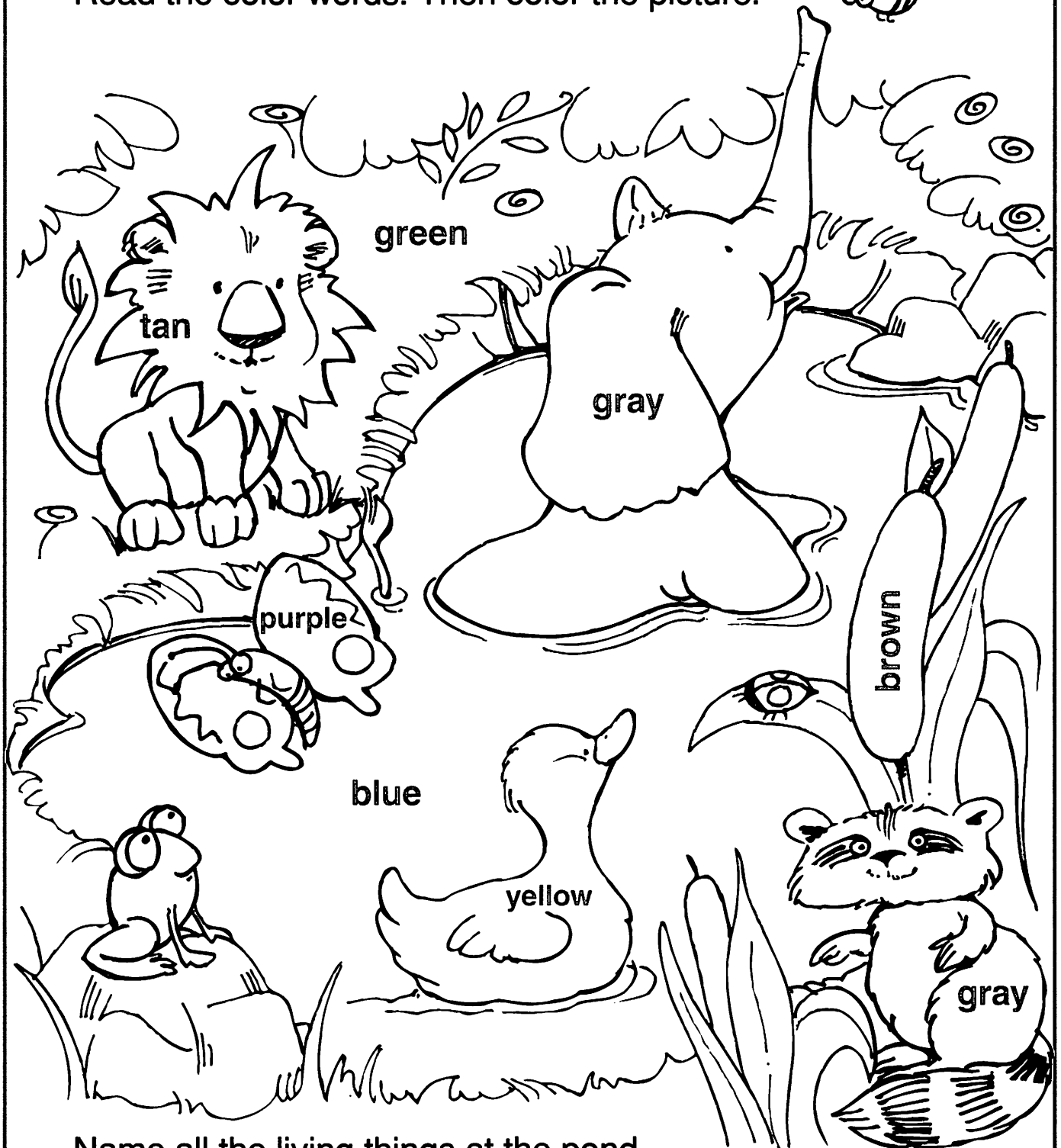
bull \_\_\_\_\_

Name \_\_\_\_\_



## The Pond in the Park

Read the color words. Then color the picture.



Name all the living things at the pond.

How many did you find? \_\_\_\_\_